

# Alaska Department of Fish and Game

Habitat Section  
Southeast Region



## 114-34-10100-2018 Tributary 1

## ADDITION

**Water body name:**

**Survey date:** 7/6/2022

**Quad:** Juneau A-5

**Species & Lifestage:**

**Upper Reach Latitude:** 58.112091 **Longitude:** -135.606997

**Survey crew:** FC, RR, DK

**Lower Reach Latitude:** 58.111777 **Longitude:** -135.604800

**Findings:** We surveyed this uncataloged stream using a backpack electrofisher and GPS. We captured juvenile coho salmon and Dolly Varden. The tributary stream flows through a fairly undefined lowland channel and becomes more defined downstream of a complex of beaver dams, where juvenile coho salmon were captured (Table 1; Figures 1–3).

**Recommendations:** Add this uncataloged stream to the anadromous waters catalog for rearing coho salmon (Figure 4).

**Nomination:** Pending

Table 1.—114-34-10100-2018 tributary 1 survey data.

Waypoint	Latitude	Longitude	Notes	Stream Width ft	Stream Substrate	Habitat Features	Gradient %	Sample Effort	Sample Results
929	58.112413	-135.607659	No defined channel at road, crossing structure removed. Wetland on both sides, no surface water.	2-4			0-1	Not Fished	
930	58.112586	-135.608225	Channel flowing on edge of hillside. Large wetland on lowland side.	2-4	Small Gravel		0-1	EF	No Fish
931	58.112439	-135.608230	Advancing downstream on channel along edge of hillside; taking waypoints for possible route correction. Low water level. Resident fish capture.					EF	4 DV
932	58.112084	-135.607681	Beaver dam providing temporary barrier to fish passage. Low water level; at ordinary high water, dam likely 2-3' higher than water with no practical jump pool due to roadbed. Resident fish capture upstream of dam; no fish downstream.	2-4	Fine Organic	Beaver Pond	1-2	EF	4 DV

Table 1.—Continued.

Waypoint	Latitude	Longitude	Notes	Stream Width ft	Stream Substrate	Habitat Features	Gradient %	Sample Effort	Sample Results
933	58.112005	-135.607166	Long beaver dam with ponded water upstream. Disconnected ponded water downstream of dam to river-right; channelized and connected straight downstream. Dam likely temporary barrier to juvenile fish passage. 2-yr CO capture just downstream of dam. End of survey on tributary.			Beaver Pond		EF	2 CO



Figure 1.—Juvenile coho salmon captured at waypoint 933.





Figure 2.—Complex of beaver dams at waypoint 933.



Figure 3.—Channel at waypoint 930.



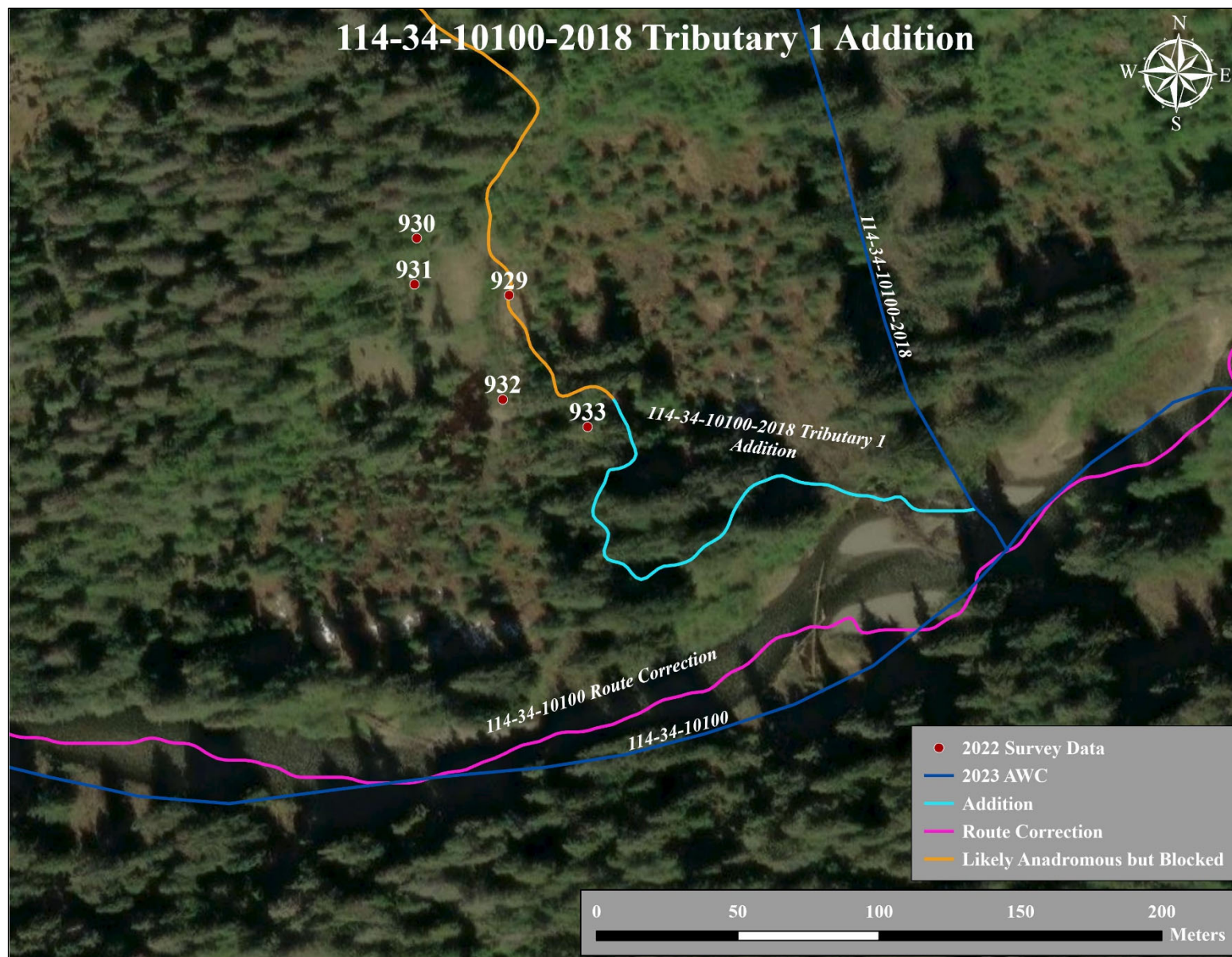


Figure 4.—114-34-10100-2018 tributary 1 addition map.